

Deploy & manage 3rd party patches & applications

EminentWare WSUS Extension Pack™ EminentWare 3rd Party Updates Pack™

More than just an update catalog... EminentWare provides an end-to-end automated patch management solution.

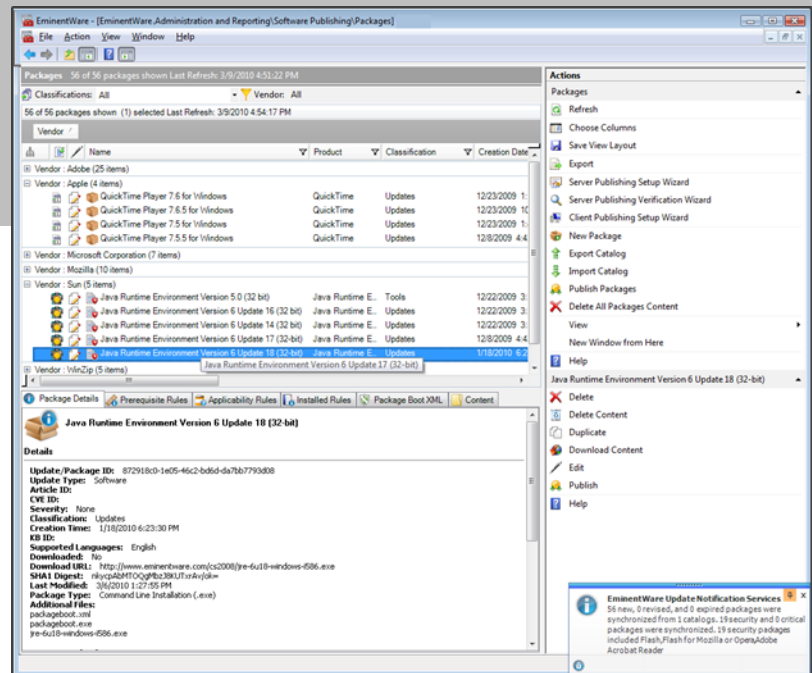
Patches for 3rd party applications such as Adobe, Mozilla, and Java are fast increasing, while most likely, your IT budget and staff are not. If your company relies on Windows Server Update Services (WSUS) for Microsoft patch management, you are faced with the expensive and time-consuming challenge of maintaining the 3rd party patches that WSUS does not support, a task which often requires hours or even days of manual research, creation, testing, and implementation.

EminentWare has the solution. By extending the capabilities of WSUS, EminentWare enables you to deploy, manage, and report on Microsoft AND non-Microsoft patches from a central point of control. Not only does EminentWare provide a continually updated catalog of 3rd party “WSUS-ready” patches, EminentWare goes beyond to automate patch management end-to-end -- from patch notification, to import/ synchronization, to publishing, approvals, deployment, scheduling, reboots, and more. Then, using EminentWare’s powerful reporting options, you can quickly determine that every patch is implemented as required. EminentWare provides an easy-to-use solution to keep desktops, laptops, and servers patched, secure, and running smoothly while also saving time, headaches, and costs.

PRODUCT HIGHLIGHTS

Extend the power of WSUS to manage Microsoft and 3rd party patches & applications. Deploy, manage, and report on both Microsoft and 3rd party patches and applications from a central point of control.

Receive pre-researched, created and tested “WSUS ready” update packages that can be quickly imported, deployed, and managed via WSUS, saving hours of research, testing, and implementation time.



EminentWare extends WSUS so you can import, deploy, manage, and report on Microsoft AND non-Microsoft patches centrally.

Receive automatic email and “Outlook-style” alerts when patches become available and also when synchronized. Receive metrics of security and critical levels. Customize your notification list so that relevant IT staff is notified when patches become available.

Packages for the most popular vendors including Adobe, Mozilla, Sun, WinZip, Apple, HP, Dell, & more.

Ensure timely patch management procedures: receive new update packages, pre-created & tested by EminentWare -- publish to WSUS on your schedule.

EminentWare WSUS Extension Pack EminentWare 3rd Party Updates Pack

Product Highlights (Cont'd):

Choose the 3rd party patches your company needs and exclude those that are not needed – simplifying the patch management & selection process. Also add links to other vendors' catalogs or your own company's catalogs.

Automatically synchronize the EminentWare 3rd Party Updates Catalog and other catalogs on a schedule that is convenient for your organization.

Create your own packages for software not in the EminentWare Catalog. Deploy any MSI, MSP, or EXE through WSUS – providing a convenient solution for deploying or patching proprietary software.

Use EminentWare's PackageBoot™ Technology when installing updates to configure pre- and post-execution steps. With PackageBoot you can:

- Stop and start services
- Bundle multiple MSI, MSP, or EXE files in a package
- Run uninstalls or custom scripts
- Dynamically detect applications that have required update files locked and in-use and stop them.

Get total control of update management with immediate updates, scheduling, reboots, detailed update approval management & more

Dynamically select which updates or machines to deploy based on groups, dates, location, and more.

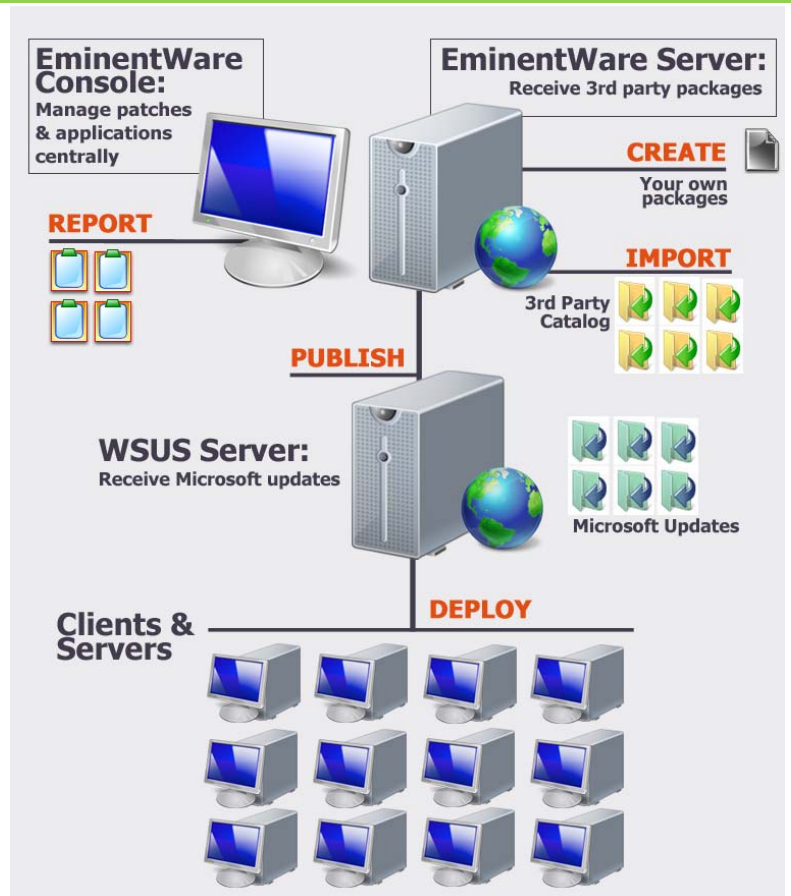
Create and distribute patch status and patch management reports – use built-in reports or easily create your own with EminentWare's powerful ad hoc reporting functionality.

Quickly determine which systems need the patch or the software you are trying to deploy.

Fast, easy install with intelligent configuration wizards.

Extend the power & functionality of your existing WSUS infrastructure with EminentWare

- Powerful reporting options, built-in or build your own
- Full discovery & inventory of 200+ system details
- Powerful scheduling including immediate update
- Dynamic machine & patch selection
- Wake on LAN
- Get total control over reboots for desktops & servers



Create, import, publish, approve, deploy, and report: EminentWare automates and simplifies the enterprise patch management process end-to-end.

Applications Supported

Below is a SAMPLE LIST of the 3rd party applications that are currently supported by the **EminentWare 3rd Party Updates Pack**. For a full list of all applications and versions supported by EminentWare 3rd Party Updates Pack, please visit: www.eminentware.com

- | | |
|----------------------|--------------------------------|
| ✓ Adobe Reader | ✓ QuickTime Player for Windows |
| ✓ Adobe Shockwave | ✓ Sun Java Runtime Environment |
| ✓ Adobe Flash | ✓ WinZip |
| ✓ Mozilla Firefox | ✓ and many more... |
| ✓ .NET Service Packs | |

Automated synchronization with 3rd party OEM catalogs including:

✓ Hewlett Packard	✓ Dell
-------------------	--------



www.eminentware.com | 1-866-441-9409

Extend the power of WSUS with EminentWare!

EminentWare WSUS Extension Pack

EminentWare + WSUS = Streamlined patch management with more power, more control, more flexibility

EminentWare's WSUS Extension Pack extends the capabilities of Microsoft's Windows Server Update Services (WSUS), offering a powerful solution for deploying, managing, and reporting on updates, applications, and configuration settings throughout an IT environment. The WSUS Extension Pack enables companies to add key IT management functionality to an existing WSUS installation, creating a more flexible, more powerful enterprise update and configuration management solution that is extremely cost-effective.

Enterprise-capable, agent-less architecture

EminentWare's WSUS Extension Pack is designed with an agent-less architecture that is easy to install, can scale out to large enterprises, or can work efficiently and cost-effectively in smaller environments.

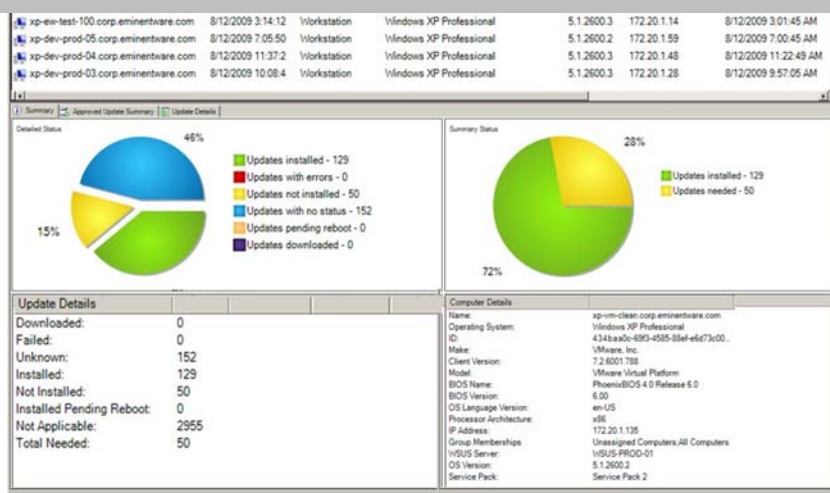
Product Highlights:

Extend WSUS to deploy, manage, and report on both Microsoft and 3rd party patches and applications from a central point of control

Receive automatic email or "Outlook Style" notification of new patches: customize the applications for which you wish to be notified.

Create your own packages to deploy any MSI, EXE, or MSP through WSUS – providing a convenient solution for deploying or patching proprietary software or software that is not covered by EminentWare.

Get total command & control of update management with immediate updates, scheduling, reboots, detailed update approval management & more



Powerful reporting options keep you informed of what is happening in your IT environment. Shown above, a summary and details about which machines have or have not reported to WSUS.

Generate powerful management & compliance reports – use built-in reports or easy-to-use ad hoc reporting

Quickly determine the status of every update, on every machine or find missing updates

Dynamically select machines or updates to deploy based on groups, dates, location, and more

Enable enterprise inventory data collection and discovery of 200+ system details including services, device drivers, registry entries, users, groups, files, and more

Discover rogue, unauthorized, or improperly configured machines, domains & workgroups

EminentWare WSUS Extension Pack: Product Details

ADVANCED PATCH MANAGEMENT

- Use PackageBoot Technology™ to configure pre- and post-implementation steps including stop & start services, bundle multiple files in a package, run uninstalls or custom scripts.
- Use “Wizard-driven” update management to get multiple servers & desktops into compliance quickly
- Schedule updates to occur when convenient, including monthly, specific days, or calendar events
- Force real-time download and install of updates from Update Server
- Dynamically choose computers to be updated based on Active Directory Domain, Organizational Unit membership, WSUS computer group membership, computer role, computer last contact time & more
- Quickly choose which patches to implement based on date released or other criteria
- View & manage computer configurations in real-time without impacting end-users
- Use advanced shutdown, reboot & wake-on-LAN capabilities
- Force refresh of Group Policy on machines
- Diagnose, repair & force re-install of the Windows Update Agent
- Organize machines into flexible groups for easier management – including WSUS computers & groups
- Use detailed approval delegation to get required approval
- quickly & easily, quickly implement approved updates

3RD PARTY PATCH & APPLICATION MANAGEMENT

- Deploy, manage & report on 3rd party patches and applications enterprise-wide, leveraging your existing WSUS installation
- Create packages to deploy any MSI, MSP, or EXE
- Manage Microsoft & 3rd party patches or applications from a central point of control
- Import and deploy hardware vendor catalogs or your own catalogs for deployment via WSUS

INVENTORY & DISCOVERY: KNOW YOUR NETWORK

- Perform enterprise-wide inventory, discover domains, workgroups & TCP/IP connected devices & services
- Gather details of over 200 system details from desktops, laptops, and servers enterprise-wide
- Identify unmanaged or rogue machines & devices on the network, improperly configured servers & workstations, or machines that are running vulnerable software applications
- View & edit the configuration of resources on the network without disturbing end-users

ADVANCED REPORTING: DOCUMENT & COMMUNICATE

- Generate management and compliance reports with pre-built reports or create custom reports with an easy-to-use custom report builder
- Create compliance reports to prove accurate auditing & configuration change control
- Get great depth & breadth in reporting for more effective update approvals, easier report targeting
- Use all-in-one reports for multiple layers of update management information in a single report
- View & report on client & server configurations, update history & status
- Execute reports immediately or on a schedule
- Configure report export formats & set automatic email notifications
- Register & inventory Windows Server Update Services

The screenshot displays the EminentWare WSUS Extension Pack interface. At the top, there's a navigation bar with tabs for 'Update Details', 'Computers Summary', 'Approvals (Direct)', 'Revision History', 'File Information', and 'Update Events'. The main area shows a table of updates with columns for Title, Classification, Declined, Arrival Date, Approval, State, and Release Date. The selected update is 'Adobe Reader 9.1 (Incremental Update 9.1.2)'. Below the table, a summary dashboard shows a pie chart and statistics: Computers installed: 0, Computers pending reboot: 0, Computers with errors: 0, Computers needing: 3, Computers with no status: 12, Computers downloaded: 0, and Computers not applicable: 65. A description for the selected update states: 'Critical vulnerabilities have been identified in Adobe Reader 9.1.1 and Acrobat 9.1.1 and earlier versions. These vulnerabilities would cause the applic and Acrobat 9 and earlier versions update to Adobe Reader 9.1.2 and Acrobat 9.1.2. Adobe recommends users of Acrobat 9 update to Acrobat 9.1.6 the Adobe Reader 8.1.6 and Adobe Reader 7.1.3 updates. Updates apply to all platforms: Windows, Macintosh and UNIX.'

Extend WSUS to deploy, manage & report on 3rd party Patches such as Adboe Reader.

ABOUT EMINENTWARE

EminentWare extends the power of Microsoft management tools such as Microsoft Windows Updates Services (WSUS) to provide a highly scalable, cost-effective and powerful enterprise patch and configuration management solution that is ideal for companies of all sizes. EminentWare automates key steps of the patch management process from notification to approvals, scheduling, deployment, management, and finally reporting on 3rd party applications.



1-866-441-9409 | www.eminentware.com